

# OMNI FIT™ Connectors and Universal Trimming Tools

Flexible tool options for fully compatible connectors



**RADIO FREQUENCY SYSTEMS**  
The Clear Choice®



# OMNI FIT™ Standard

## OMNI FIT™ connector families

RFS connectors are designed for high performance, easy installation and full compatibility throughout the CELLFLEX® family. The entire range of innovative OMNI FIT™ Premium and OMNI FIT™ Standard connectors work with both copper and aluminum cables. A perfect complement to the CELLFLEX® transmission line range, OMNI FIT™ connectors provide users with familiar connection options, premium electrical characteristics and reliable, long-life use.

## OMNI FIT™ Standard connectors

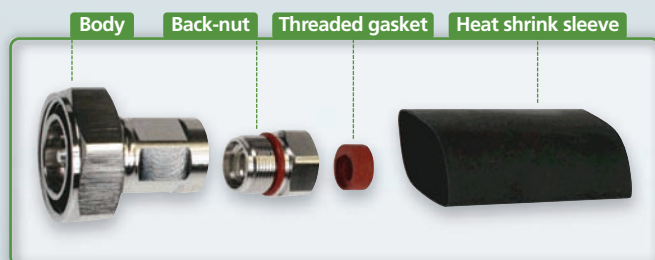
RFS' OMNI FIT™ Standard connectors are designed to meet and exceed industry standard Voltage Standing Wave Ratio (VSWR) and PIM performance. The connectors offer a cost-effective, high-quality connector-to-cable interface for easy, fast and safe connector attachment.

## Characteristics of OMNI FIT™ Standard connectors

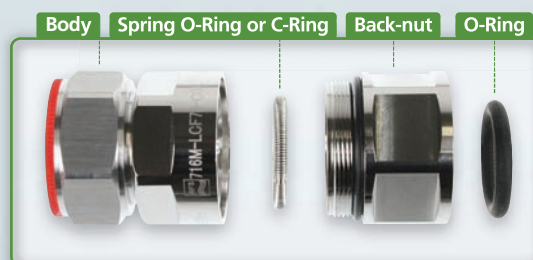
- ➔ Cost effective two-piece design for safe and easy installation
- ➔ Compatible with copper and aluminum cable types, one connector for both outer conductor materials eliminates the risk of faulty connector installation and helps to keep inventory down
- ➔ Robust mechanical design for low and consistent intermodulation performance, maintains mobile network performance, reducing the number of dropped calls and avoids revenue losses
- ➔ Consistent standard electrical performance improves network system performance
- ➔ RoHS (EU) and CRoHS (China) compliant, can be used on a global basis
- ➔ Waterproof to IP 68 – no downtime risk, secures revenue
- ➔ The O-ring seals against the outer conductor – in line with the RFS sealing concept
- ➔ Additional sealing for added protection is available from RFS.



## OMNI FIT™ Standard connectors



OMNI FIT™ Standard for SCF 12



OMNI FIT™ Standard for LCF 12 up to 158

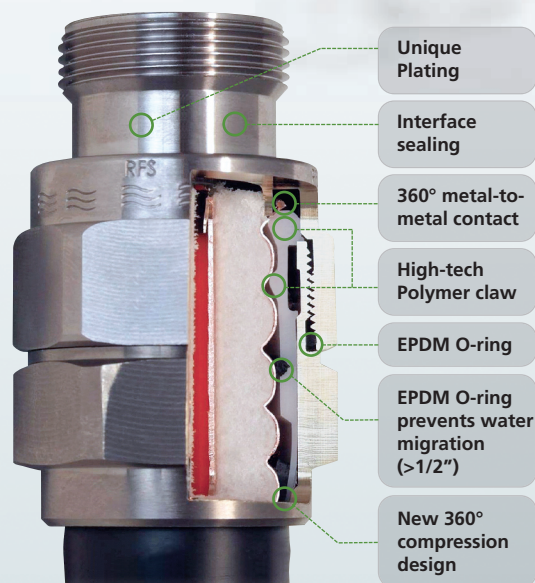
# OMNI FIT™ Premium

## OMNI FIT™ Premium connectors

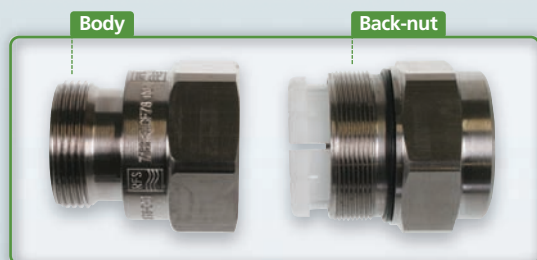
OMNI FIT™ Premium, RFS' line of premium RF connectors, feature design innovations for best-in-class performance and value. OMNI FIT™ Premium ensures hassle-free installation, safe sealing and industry best PIM levels. These connectors provide such a secure, watertight seal that no additional weatherproofing is required. The unique sealing process and the dual-grip function of the high-tech polymer claw ensures long-term premium VSWR and PIM performance. This helps avoid difficult-to-detect, latent failures in the RF path that gradually degrade network quality over time. Operators save time and money, leading to reduced total cost of ownership.

## Characteristics of OMNI FIT™ Premium connectors

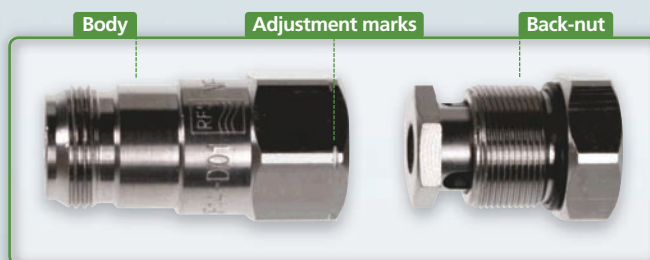
- ➔ Innovative two-piece, multi-thread design for safe and easy installation
- ➔ Compatible with copper and aluminum cable types, one connector for both outer conductor materials eliminates the risk of faulty connector installation and helps to keep inventory down
- ➔ Dual-grip design on the corrugated outer conductor for enhanced stability – virtually eliminates any risk of potential PIM and avoids electrochemical potentials, ensures mobile network performance, reducing the number of dropped calls and avoids revenue losses
- ➔ Unique plating combines superior electrical performance with long lasting shiny appearance
- ➔ RoHS (EU) and CRoHS (China) compliant, can be used on a global basis
- ➔ Waterproof to IP 68 – no downtime risk, secures revenue
- ➔ EPDM O-ring prevents water migration due to jacket imperfections
- ➔ No additional sealing required
- ➔ The new 360° compression design provides an extreme watertight seal to the cable jacket and improves mechanical stability.
- ➔ Exceeds even the strongest dynamic PIM specifications, fit for on-site PIM testing



## OMNI FIT™ Premium connectors



OMNI FIT™ Premium for LCF 14 up to 158



OMNI FIT™ Premium for SCF14 up to SCF12



# Universal Tools for CELLFLEX® cables and connectors

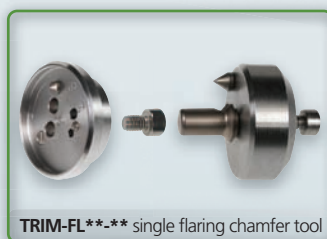
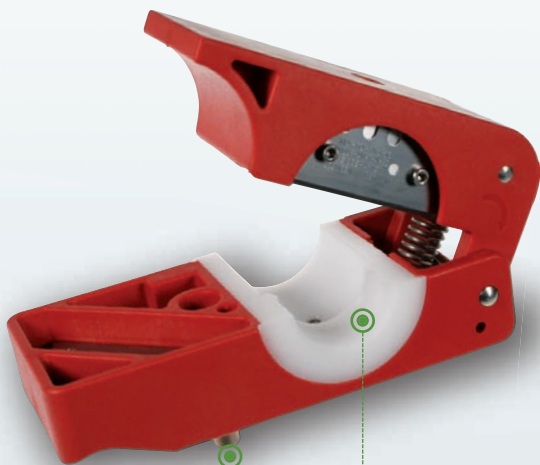
The Universal Trimming Tool Series prepares foam-dielectric coaxial cables for connector attachment. The integrated chamfer and flare station eliminates the need for individual tools for jacket trimming, deburring and

proper flaring. Each tool contains two preset cutting blades designed to efficiently trim the outer conductor and foam dielectric for proper connector installation. It also identifies the cable jacket cut back position.

**The tool series offers the additional advantage to be convertible to different connector families and cable sizes by changing the insert.** Different inserts are available as optional orderable items.

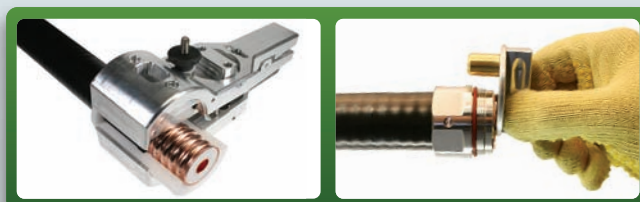
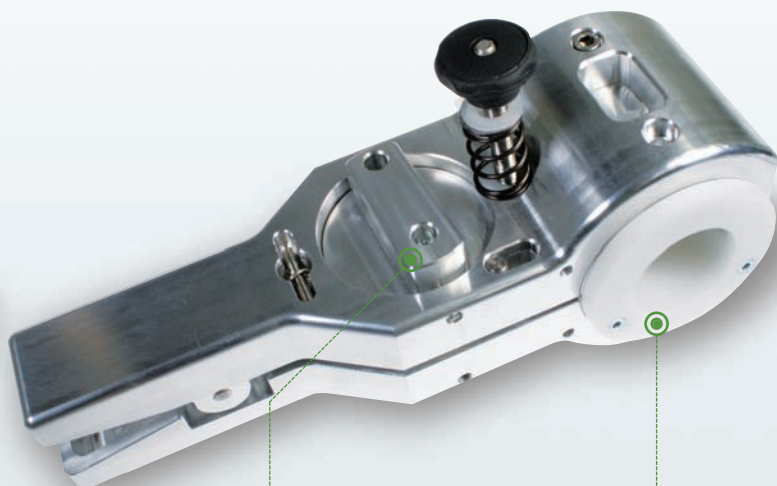
## Universal Tool for cable sizes up to 7/8"

**TRIM-SET-\*\*\*-\*\*\*** tool complete with one set of inserts



## Universal Tool for cable sizes 1-1/4" & 1-5/8"

**TRIM-SET-L\*\*\*-\*\*\*** tool complete with one set of inserts



# Flexible options using RFS Universal tools

CELLFLEX® Cable		Connectors		Sealing method*		Universal Trimming tools			
Cable type	Structure material	Family	Type	Sealing against outer conductor	Sealing against jacket	Universal Trimming tool Complete with inserts	Inserts for extension Single Insert Kit (upper & lower)		Spare blades
SCF14-50J SCF14-50JFN	Cu	D01	OMNI FIT™ Premium Connector	Threaded gasket	360° compression	TRIM-SET-S14-D01	TRIM-IS14-D01	not required	TRIM-B30
		001 & 045	Cut & FIT for Copper cables only	Heatshrink sleeve	Heatshrink sleeve	-	-	-	-
SCF38-50J SCF38-50JFN	Cu	D01	OMNI FIT™ Premium Connector	Threaded gasket	360° compression	TRIM-SET-S38-D01	TRIM-IS38-D01	not required	TRIM-B30
		070 & 071	RAPID FIT™ for Copper cables only	Threaded gasket	Threaded gasket	-	-	-	-
SCF12-50J SCF12-50JFN	Cu	D01	OMNI FIT™ Premium Connector	Threaded gasket	360° compression	TRIM-SET-S12-D01	TRIM-IS12-D01	not required	TRIM-B30
		C02	OMNI FIT™ Standard Connector	Threaded gasket	Heatshrink sleeve	TRIM-SET-S12-C02	TRIM-IS12-C02	not required	TRIM-B30
		070 & 071	RAPID FIT™ for Copper cables only	Threaded gasket	Threaded gasket	TRIM-SET-S12-D01	TRIM-IS12-D01	not required	TRIM-B30
LCF14-50J LCF14-50JFN	Cu	D01	OMNI FIT™ Premium Connector	O-Ring	360° compression	TRIM-SET-L14-D01	TRIM-IL14-D01	TRIM-FL14-12	TRIM-B30
		070 & 071 & 075	RAPID FIT™ for Copper cables only	O-Ring	Heatshrink sleeve	-	-	-	-
LCF38-50J LCF38-50JFN	Cu	070 & 071	RAPID FIT™ for Copper cables only	O-Ring	Heatshrink sleeve	-	-	-	-
LCF12-50J LCF12-50JFN LCF12-50JL LCF12-50JFNL	Cu and Al	D01	OMNI FIT™ Premium Connector	High-tech polymer 360° compression		TRIM-SET-L12-D01	TRIM-IL12-D01	TRIM-FL14-12	TRIM-B30
		C02	OMNI FIT™ Standard Connector	O-Ring	Optional**	TRIM-SET-L12-C02	TRIM-IL12-C02	TRIM-FL14-12	TRIM-B30
		B32	OMNI FIT™ Standard Connector	O-Ring	Optional**	TRIM-SET-L12-D01	TRIM-IL12-D01	TRIM-FL14-12	TRIM-B30
LCF12-50J LCF12-50JFN	Cu	060 & 061	RAPID FIT™ for Copper cables only	PLAST 2000 (not included)	PLAST 2000 (not included)	TRIM-SET-L12-D01	TRIM-IL12-D01	TRIM-FL14-12	TRIM-B30
		070 & 071	RAPID FIT™ for Copper cables only	O-Ring	Optional**	-	-	-	-

\* **Note:** The RFS sealing concept is to always seal against the cable outer conductor for optimum sealing and guaranteed system integrity. Using additional sealing for standard connector families is up to the end user. It is ensured by the integrated 360° compression sealing for premium connector families.

\*\* **Note:** To be provided on site based on customer choice and preference. Mandatory for Aluminum cables.

# Flexible options using RFS Universal tools

CELLFLEX® Cable		Connectors		Sealing method*		Universal Trimming tools			
Cable type	Structure material	Family	Type	Sealing against outer conductor	Sealing against jacket	Universal Trimming tool Complete with inserts	Inserts for extension Single Insert Kit (upper & lower)	Single Flaring tool	Spare blades
LCF78-50JA LCF78-50JFNA LCF78-50JL LCF78-50JFN UCF78-50JA UCF78-50JFNA UCF78-50JL UCF78-50JFNL	Cu and Al	D01	OMNI FIT™ Premium Connector	O-Ring	360° compression	TRIM-SET-L78-D01	TRIM-IL78-D01	TRIM-FL78	TRIM-B30
		C02	OMNI FIT™ Standard Connector	O-Ring	Optional**	TRIM-SET-L78-C02	TRIM-IL78-C02	TRIM-FL78	TRIM-B30
		B32	OMNI FIT™ Standard Connector	O-Ring	Optional**				
		022	OMNI FIT™ Premium Connector	O-Ring	Silicone rubber sleeve	-	-	-	-
LCF78-50JA LCF78-50JFNA UCF78-50JA UCF78-50JFNA	Cu	060 & 062	RAPID FIT™ for Copper cables only	PLAST 2000 (not included)	PLAST 2000 (not included)	TRIM-SET-L78-D01	TRIM-IL78-D01	TRIM-FL78	TRIM-B30
		070 & 072	RAPID FIT™ for Copper cables only	O-Ring	Optional**				
LCFS114-50JA LCFS114-50JFNA LCFS114-50JL LCFS114-50JFNL UCF114-50JA UCF114-50JFNA UCF114-50JL UCF114-50JFNL	Cu and Al	D01	OMNI FIT™ Premium Connector	O-Ring	360° compression	TRIM-SET-L114-D01	TRIM-IL114-D01		TRIM-B31
		C02	OMNI FIT™ Standard Connector	O-Ring	Optional**	TRIM-SET-L114-C02	TRIM-IL114-C02		TRIM-B31
		B32	OMNI FIT™ Standard Connector for LCFS cables	O-Ring	Optional**	TRIM-SET-L114-001	TRIM-IL114-001		TRIM-B31
LCFS114-50JA LCFS114-50JFNA UCF114-50J UCF114-50JFNA	Cu	060 & 062	RAPID FIT™ for Copper cables only	PLAST 2000 (not included)	PLAST 2000 (not included)	TRIM-SET-L114-001	TRIM-IL114-001		TRIM-B31
		070 & 072	RAPID FIT™ for Copper cables only	O-Ring	Optional**				
LCF158-50JA LCF158-50JFNA LCF158-50JL LCF158-50JFNL	Cu and Al	D01	OMNI FIT™ Premium Connector	O-Ring	360° compression	TRIM-SET-L158-D01	TRIM-IL158-D01		TRIM-B31
		C02	OMNI FIT™ Standard Connector	O-Ring	Optional**	TRIM-SET-L158-C02	TRIM-IL158-C02		TRIM-B31
		B32	OMNI FIT™ Standard Connector	O-Ring	Optional**	TRIM-SET-L158-001	TRIM-IL158-001		TRIM-B31
		022	OMNI FIT™ Premium Connector	O-Ring	Silicone rubber sleeve				
LCF158-50JA LCF158-50JFNA	Cu	060 & 062	RAPID FIT™ for Copper cables only	PLAST 2000 (not included)	PLAST 2000 (not included)	TRIM-SET-L158-001	TRIM-IL158-001		TRIM-B31
		070 & 072	RAPID FIT™ for Copper cables only	O-Ring	Optional**				

\* **Note:** The RFS sealing concept is to always seal against the cable outer conductor for optimum sealing and guaranteed system integrity. Using additional sealing for standard connector families is up to the end user. It is ensured by the integrated 360° compression sealing for premium connector families.

\*\* **Note:** To be provided on site based on customer choice and preference. Mandatory for Aluminum cables.



# Why RFS?

## A worldwide leader in wireless and broadcast infrastructure



**Radio Frequency Systems (RFS) is a global designer and manufacturer of cable, antenna and tower systems along with active and passive RF conditioning modules, providing total-package solutions for wireless and broadcast infrastructure.**

**RFS serves OEMs, distributors, systems integrators, operators and installers in the broadcast, wireless communications, land-mobile and microwave market sectors.**

**As an ISO-compliant organization with manufacturing and customer-service facilities that span the globe, RFS offers cutting-edge engineering capabilities, superior field support and innovative product design.**

### Serious about services

Customers know they can count on RFS for comprehensive logistical capabilities, flawless execution and outstanding technical skills and support. The company's dedicated shipment coordinators, hotline staff and on-site engineers go well beyond mere technology, striving to offer tailored solutions to meet even the most complex site-engineering and delivery challenges.

RFS' value-added services match the exact needs of business partners large and small.

### Ever-present quality guarantee

From design to manufacture, ISO 9001 and ISO 14001 certification standards encompass all aspects of RFS' business worldwide. Every product RFS ships has stood up to the most stringent technical, environmental and quality control tests, continuously meeting and surpassing the expectations of a long list of wireless carriers, transportation and utility operators, and broadcasters.

RFS backs every product bearing its name with a quality guarantee that is unrivaled in the market.

### A legacy of innovation

A total commitment to design and develop the world's most advanced technology for wireless communication has kept RFS at the forefront of the industry for more than 70 years. Dedicated R&D teams, plus a privileged partnership with Bell Labs, are at the source of breakthroughs that are ensuring the mobility of an increasingly wireless world.

RFS is at the frontier of wireless technology innovation, sustaining the boldest ventures to enhance the way people communicate and live.

### A truly global company

With on-the-ground personnel in more than 20 countries and on every continent, RFS always delivers on its commitments, providing a comprehensive range of premium products, systems and services. Its clients benefit from all the advantages of a global supplier, while relying on dedicated support from RFS' local engineering, manufacturing and shipping teams.

RFS' products, systems and personnel can be found in every corner of the planet. As a global group, RFS is committed to upholding the most stringent environmental, health and safety standards, and seeks to integrate green initiatives in every aspect of its business.

